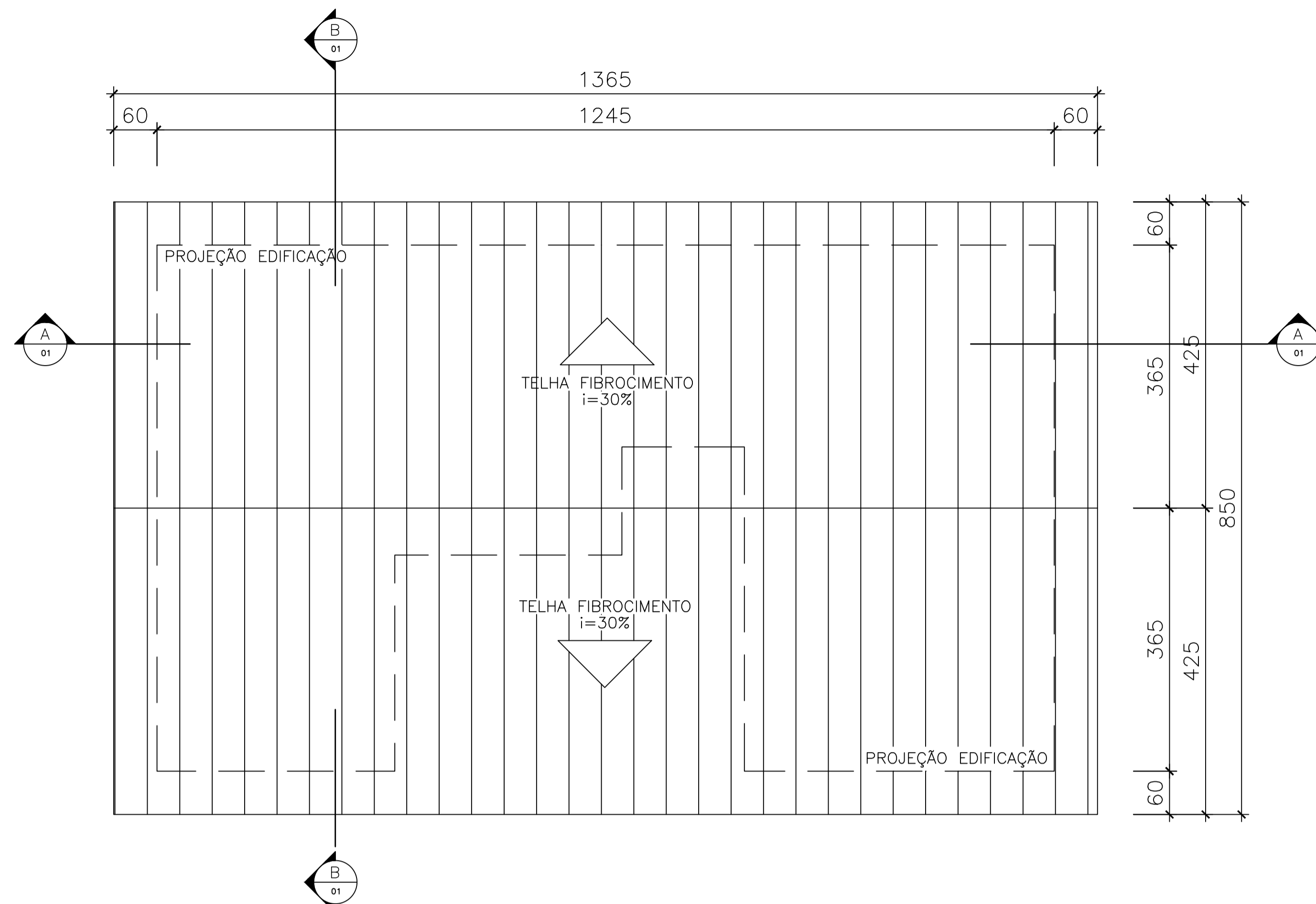
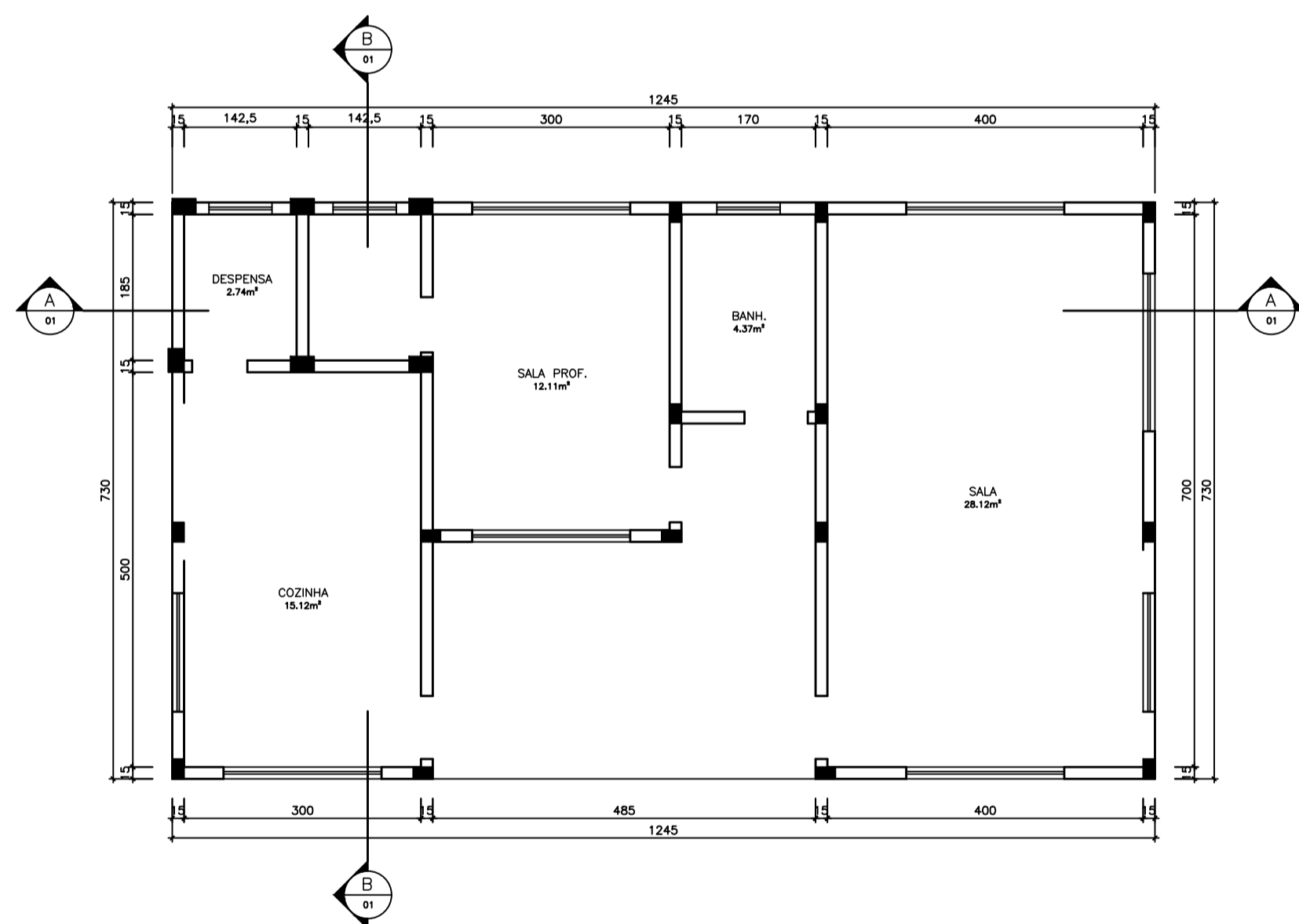


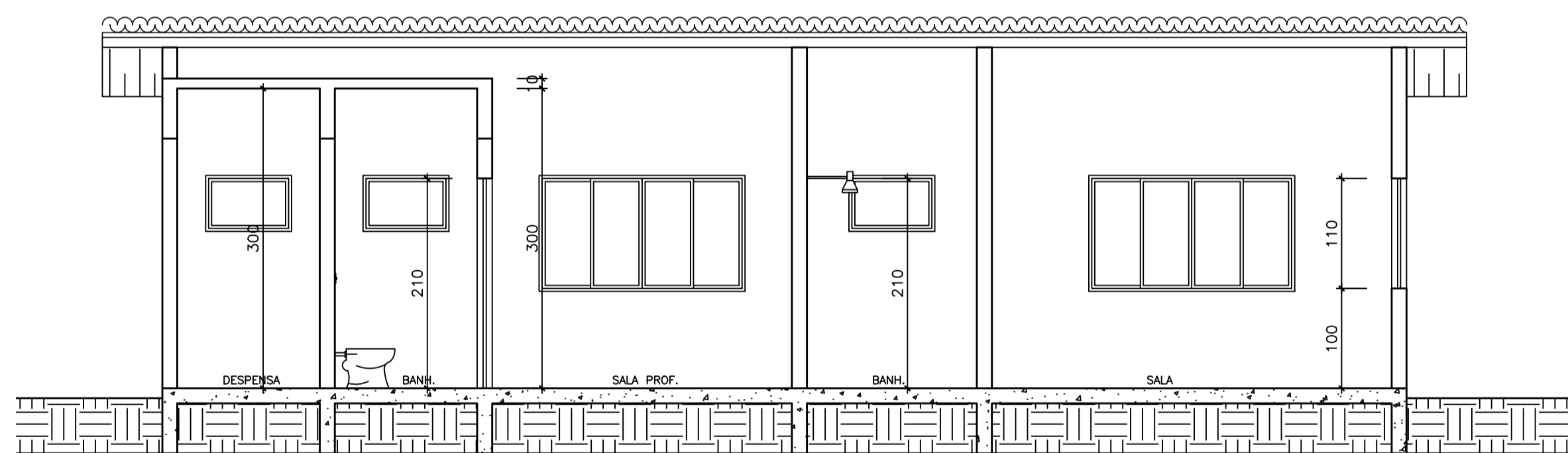
1 PLANTA BAIXA
1/50



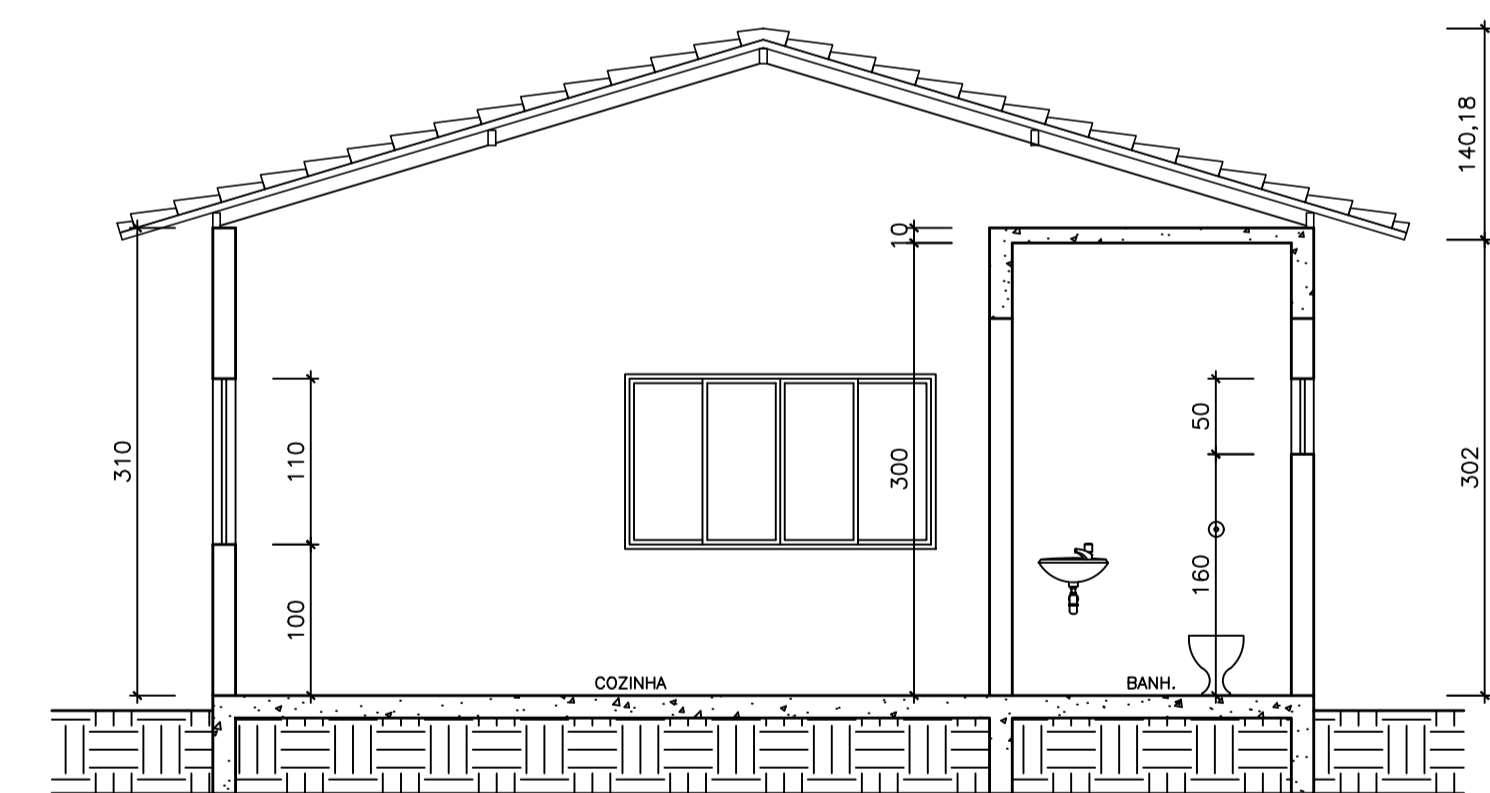
2 PLANTA DE COBERTURA
1/50



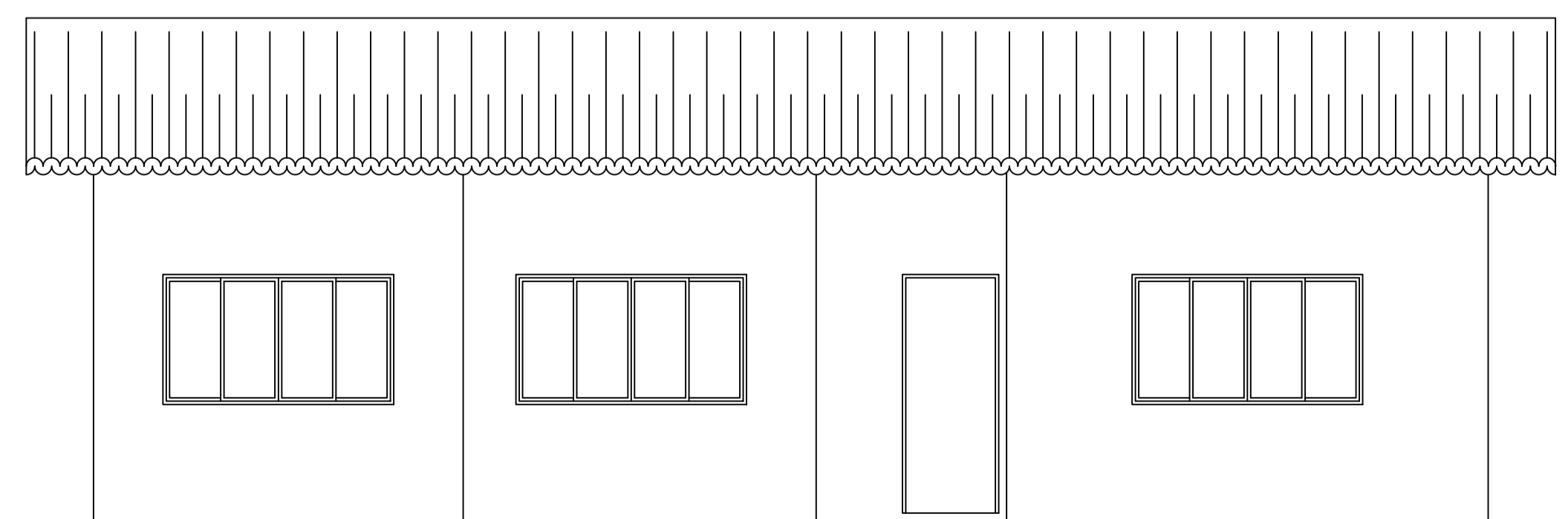
6 PLANTA DE LOCAÇÃO DE PILARES
1/75




3 CORTE AA
1/50



4 CORTE BB
1/50



5 FACHADA
1/50

 PREFEITURA MUNICIPAL DE SÃO MATEUS ADM 2017/2020 SECRETARIA MUNICIPAL DE EDUCAÇÃO		TÍTULO:	
		CEIM - GEORGINA	
LOCAL:		RODOVIA MIGUEL CURRY BR 381-NOVA VENÉCIA-KM41-ASSENTAMENTO PALMEIRA-NESTOR	
RESP. TÉCNICO ENG. CIVIL:		DESENHO:	
MIKE CLITON DOS SANTOS NUNES ES-039981/D		KATIELE VIANA/ JESSICA NASCIMENTO	
CONTEÚDO: PLANTA BAIXA, PLANTA DE COBERTURA, CORTES, FACHADA E PLANTA DE LOCAÇÃO DE PILARES.	DATA: JUNHO/2019	REVISÃO: 0000	FOLHA: 01/02
		ESCALA: INDICADA	